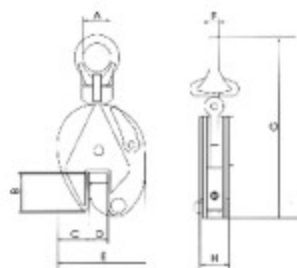


## 欧洲款式 QC-A型 垂吊夹钳 VERTICAL CLAMP

QC-A型垂吊夹钳适用于垂直吊装和搬运，设有安全自锁装置，具有夹紧迅速、工作安全、效率高、维护简单、使用方便等特点，规格有1/2t, 1t, 2t, 3t, 5t。



Ultimate load=WLL×4  
Alloy Steel-Quenched and Tempered.  
Individually Proof Tested.



QC-A-Cluidiao tongs apply to the vertical lifting and handling, safety since Locking devices, clamping a rapid, work safety, high efficiency, easy maintenance, With convenient features, specifications have 1/2 t, 1t, 2t, 3t, 5t.

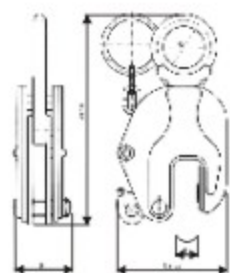
规格 Model	0.5t	1t	2t	3t	5t	
额定载重量 Rated capacity t	0.5	1	2	3	5	
试验载荷 test load KN	7.35	14.7	29.4	44.1	73.5	
钳口夹持最大厚度 Max jaw Opening mm	15	20	25	30	50	
主要尺寸 (mm) Dimensions	A	Φ30	Φ48	Φ48	Φ74	Φ80
	B	43	43	74	85	90
	C	34.5	51	59	54	45
	D	0-15	0-20	0-25	0-30	0-52
	E	103	138	144	193	240
	F	10	12	14	20	22
	G	212	294	370	418	450
	H	34	50	52	78	88
净重 Net weight kg	2	1.8	4.5	15	23	
单台包装体积 Volume cm	230x115	310x78	380x119	450x122	480x142	

## 欧洲款式 QC-B型 垂吊夹钳 VERTICAL CLAMP

QC-B型垂吊夹钳适用于垂直吊装和搬运，设有安全自锁装置，具有夹紧迅速、工作安全、效率高、维护简单、使用方便等特点，规格有1t, 2t, 3t, 5t。



Ultimate load=WLL×4  
Alloy Steel-Quenched and Tempered.  
Individually Proof Tested.



QC-B-Cluidiao tongs apply to the vertical lifting and handling, safety locking device, a clamp quickly, work safety, high efficiency, maintenance of simple, user-friendly features such as size of 1 t, 2t, 3t, 5t.

规格 Model	1t	2t	3t	5t	
额定载重量 Rated capacity t	1	2	3	5	
试验载荷 test load KN	12.24	24.52	34.77	41.3	
钳口夹持最大厚度 Max jaw Opening mm	22	30	35	50	
主要尺寸 (mm) Dimensions	Amin	241	271	319	390
	B	44	79	88.5	100
	Cmax	127	148	187	235
	D	Φ48	Φ58	Φ42	Φ70
	H	0-25	0-34	0-39	0-54
净重 Net weight kg	3.8	5.4	8.8	15.5	
单台包装体积 Volume cm	26x8x14	29x10x19	34x11x21	41x12x26	

QC-A-type hanging clamp specifications are 0.75t, 1.5t, 2.5t, is a safe, lightweight, flexible steel lifting tool, a small size, light weight, easy to carry, and other characteristics, especially applicable to the board of Lifting the level and handling.

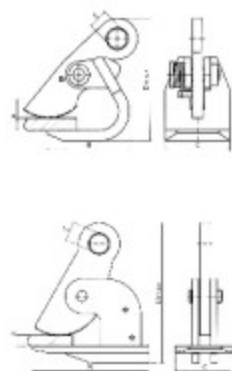
规格 Model	0.75t	1.5t	2.5t	
额定载重量 t Rated capacity	只 single	0.75	1.5	2.5
	对 double	1.5	3	5
试验载荷 KN Test load	只 single	11.04	22.07	34.79
	对 double	22.07	44.13	73.58
钳口夹持最大厚度 Max jaw Opening mm	50	50	40	
主要尺寸 (mm) Dimensions	A	0-52	0-52	0-42
	B	127	220	240
	C	100	110	130
	Dmax	218	270	315
	E	Φ30	Φ34	Φ40
净重 kg Net weight	只 single	4.3	7.7	14.1
	对 double	8.4	15.4	28.2
单台包装体积 Volume cm	17x12x24	26x18x20	30x18x25	

## 欧洲款式 QP-A 平吊夹钳 HORIZONTAL CLAMP

QP-A型平吊夹钳规格有0.75t, 1.5t, 2.5t等，是一种安全、轻巧、灵活的钢板吊运工具，具有体积小、重量轻、携带方便等特点，特别适用于板件的水平吊装和搬运。



Ultimate load=WLL×4  
Alloy Steel-Quenched and Tempered.  
Individually Proof Tested.



## 日本款式全模锻机体吊钳 JAPAN SERIES CLAMP (FORGED BODY)

### E-TYPE VERTICAL LIFTING CLAMP

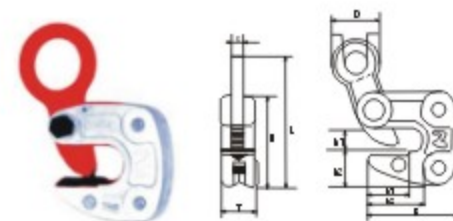


### 安全立吊

Model No. (KG)	Lifting Cap. (KN)	Test Load (mm)	Jaw Opening (KG)	A	B	C	D	E	F	G	H	I	J	Net Wt
E-0001	1000	19.6	0-22	24	36	125	50	24	220-260	30	156	52	14	3.6
E-0002	2000	39.2	0-30	35	45	155	60	30	250-295	38	190	60	18	6.0
E-0003	3000	58.8	0-35	40	50	175	60	35	296-360	40	226	68	20	9.2
E-0005	5000	98	0-50	50	58	218	65	42	350-420	60	270	76	22	16.5

Ultimate load=WLL×4  
Alloy Steel-Quenched and Tempered.  
Individually Proof Tested.

### HLC-TYPE HORIZONTAL LIFTING CLAMP



### 安全横吊

MODEL	SIZE(tons)	Clamping range	L	t	T	H	h1	h2	B	b1	b2	D	d	Weight(kg)
HLC-1	1	1-13	173	14	32	104	23.5	39.5	105	66	44	72	46	1.6
HLC-2	2	3-22	233	18	42	130	36	50	137	87	58	96	61	3.9
HLC-3	3	12-35	261	23	52	177	42	67.5	173.5	107	68	80	35	9

Ultimate load=WLL×4  
Alloy Steel-Quenched and Tempered.  
Individually Proof Tested.

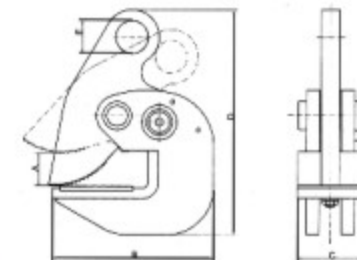
## 欧洲款式 QP-B 平吊夹钳 HORIZONTAL CLAMP

QP-B型平吊夹钳规格有0.75t, 1.5t, 2.5t等，是一种安全、轻巧、灵活的钢板吊运工具，具有体积小、重量轻、携带方便等特点，特别适用于板件的水平吊装和搬运。

QP-B-type hanging clamp specifications are 0.75t, 1.5t, 2.5t, is a safe, lightweight, flexible steel lifting tool, a small size, light weight, easy to carry, and other characteristics, especially applicable to the board of Lifting the level and handling.



Ultimate load=WLL×4  
Alloy Steel-Quenched and Tempered.  
Individually Proof Tested.



规格 Model	0.75t	1.5t	2.5t	
额定载重量 t Rated capacity	只 single	0.75	1.5	2.5
	对 double	1.5	3	5
试验载荷 KN Test load	只 single	11.04	22.07	34.79
	对 double	22.07	44.13	73.58
钳口夹持最大厚度 Max jaw Opening mm	25	25	40	
主要尺寸 (mm) Dimensions	A	0-27	0-32	0-52
	B	125	157	231
	C	50	45	90
	Dmax	175	204	310
	E	Φ25	Φ30	Φ40
净重 kg Net weight	只 single	2.4	3.9	13.4
	对 double	4.8	7.8	26.8
单台包装体积 Volume cm	17x8x24	21x9x22	30x12x31	