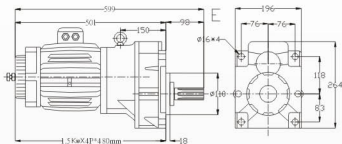
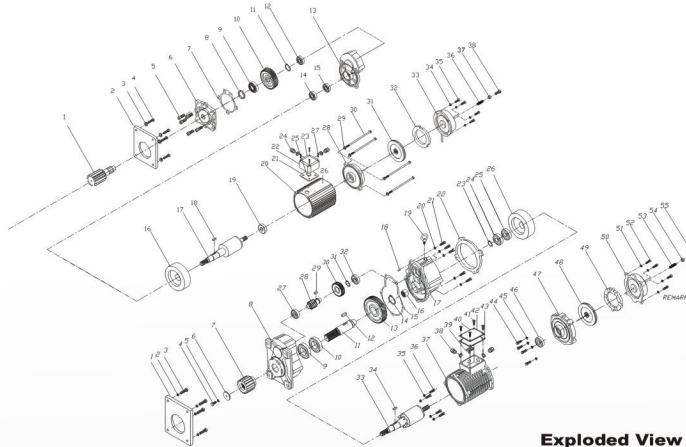
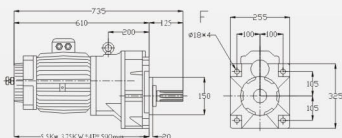


**TYPE / E**

TYPE	KW	P	VOLTAGE	RATIO	50HZ	60HZ	G	WEIGHT
E110P4LS E110P4HS	1.1	4	220-600	16 11.5	91/127	109/153	M4 M5 M6	58
E075P4LS E075P4HS	0.75	6	220-600	16 11.5	61/85	73/102	M4 M5 M6	58
E150P4LS E150P4HS	1.5	4	220-600	16 11.5	91/127	109/153	M4 M5 M6	66
E110P6LS E110P6HS	1.1	6	220-600	16 11.5	61/85	73/102	M4 M5 M6	66
E220P4LS E220P4HS	2.2	4	220-600	16 11.5	91/127	109/153	M4 M5 M6	82
E150P6LS E150P6HS	1.5	6	220-600	16 11.5	61/85	73/102	M4 M5 M6	82
E060C2LS E060C2HS	0.6+0.3	4#8	220-600	16 11.5	91/45-127/63	109/55-153/76	M4 M5 M6	58
E060C3LS E060C3HS	0.6+0.2	4#12 2#6	220-600	16 11.5	91/30-127/42	109/36-153/51	M4 M5 M6	58
E075C2LS E075C2HS	0.75+0.38	4#8	220-600	16 11.5	91/45-127/63	109/55-153/76	M4 M5 M6	66
E075C3LS E075C3HS	0.75+0.25	4#12 2#6	220-600	16 11.5	91/30-127/42	109/36-153/51	M4 M5 M6	66
E150C2LS E150C2HS	1.5+0.75	4#8	220-600	16 11.5	91/45-127/63	109/55-153/76	M4 M5 M6	82
E150C3LS E150C3HS	1.5+0.45	4#12 2#6	220-600	16 11.5	91/30-127/42	109/36-153/51	M4 M5 M6	82
E220C2LS E220C2HS	2.2+1.1	4#8	220-600	16 11.5	91/45-127/63	109/55-153/76	M4 M5 M6	95
E220C3LS E220C3HS	2.2+0.75	4#12 2#6	220-600	16 11.5	91/30-127/42	109/36-153/51	M4 M5 M6	95
E300P4LS E300P4HS	3	4	220-600	16 11.5	61/85	73/102	M4 M5 M6	92
E220P6LS E220P6HS	2.2	6	220-600	16 11.5	91/127	109/153	M4 M5 M6	92


**TYPE / F**

TYPE	KW	P	VOLTAGE	RATIO	50HZ	60HZ	G	WEIGHT
F375P4LS F375P4HS	3.75	4	220-600	18.5 12	79/123	95/147	M4 M5 M6	110
F220P6LS F220P6HS	2.2	6	220-600	18.5 12	53/82	63/98	M4 M5 M6	110
F550P4LS F550P4HS	5.5	4	220-600	18.5 12	79/123	95/147	M4 M5 M6	139
F375P6LS F375P6HS	3.75	6	220-600	18.5 12	53/82	63/98	M4 M5 M6	139
F750P4LS F750P4HS	7.5	4	220-600	18.5 12	79/123	95/147	M4 M5 M6	148
F550P6LS F550P6HS	5.5	6	220-600	18.5 12	53/82	63/98	M4 M5 M6	148
F220C2LS F220C2HS	2.2+1.1	4#8	220-600	18.5 12	79/39-123/62	95/47-147/73	M4 M5 M6	110
F220C3LS F220C3HS	2.2+0.75	4#12 2#8	220-600	18.5 12	79/26-123/41	95/32-49/24	M4 M5 M6	110
F300C2LS F300C2HS	3#1.5	4#8	220-600	18.5 12	79/39-123/62	95/47-147/73	M4 M5 M6	139
F300C3LS F300C3HS	3#1	4#12 2#6	220-600	18.5 12	79/26-123/41	95/32-49/24	M4 M5 M6	139
F375C2LS F375C2HS	3.75#1.8	4#8	220-600	18.5 12	79/39-123/62	95/47-147/73	M4 M5 M6	148
F375C3LS F375C3HS	3.75#1.25	4#12 2#6	220-600	18.5 12	79/26-123/41	95/32-49/24	M4 M5 M6	148

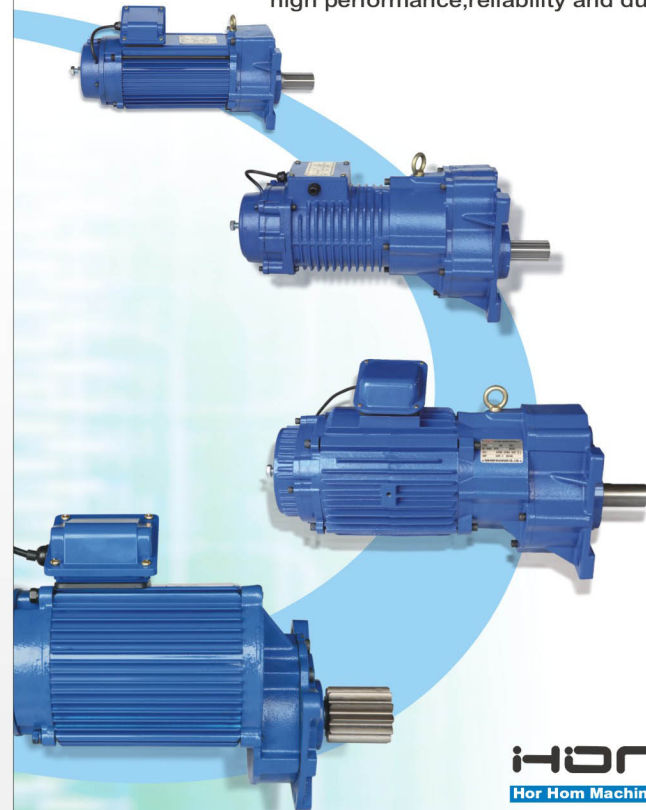

**Exploded View**

DESCRIPTION	QTY	DESCRIPTION	QTY	DESCRIPTION	QTY	DESCRIPTION	QTY
1. PINION-SHAFT	1	11. GEAR RING	1	21. GASKET	1	31. BRAKE LINING	1
2. PLATE	1	12. BALL BEARING	1	22. ALUMINIUM BOX	1	32. FRICTION DISC	1
3. SPRING LOCK WASHER	4	13. GEAR CASE B.	1	23. ALUMINIUM COVER	1	33. BRAKE COVER	1
4. HEX-BOLT	4	14. BALL BEARING	1	24. CABLE GLAND	2	34. SPRING LOCK WASHER	3
5. HEX-SOCKET CAP BOLT	5	15. BALL BEARING	1	25. DIODE	1	35. HEX-SOCKET CAP BOLT	3
6. GEAR CASE A	1	16. FLY WHEEL	1	26. NAME PLATE	1	36. BRAKE SPRING	1
7. PAPER SLICE	1	17. ROTOR+1" PINION	1	27. HEX-SOCKET CAP BOLT	4	37. TORQUE ADJUSTING NUT	1
8. BUSH	1	18. ROTOR + 1" PINION KEY	1	28. MOTOR COVER FOR BRAKE	1	38. TORQUE ADJUSTING BOLT	1
9. BALL BEARING	1	19. BALL BEARING	1	29. SPRING LOCK WASHER	4		
10. 1" GEAR	1	20. MOTOR HOUSING	1	30. HEX-SOCKET CAP BOLT	4		

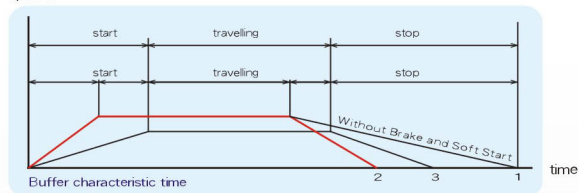
DESCRIPTION	QTY	DESCRIPTION	QTY	DESCRIPTION	QTY	DESCRIPTION	QTY
1. PLATE	1	15. PAPER SLICE	1	29. KEY	1		1
2. SPRING LOCK WASHER	4	16. LONG ROLLER BEARING	1	30. 1" GEAR	1	43. PAPER SLICE	4
3. HEX BOLT	4	17. GEAR CASE B	1	31. 1" PINION RING	1	44. HEX-SOCKET CAP BOLT	4
4. TORQUE ADJUSTING BOLT	1	18. PIN	1	32. BALL BEARING	1	45. SPRING LOCK WASHER	1
5. SPRING LOCK WASHER	1	19. EYEBOLT	1	33. ROTOR + 1" SHAFT	1	46. BALL BEARING	1
6. WASHER	1	20. SPRING LOCK WASHER	5	34. ROTOR + 1" SHAFT KEY	1	47. MOTOR COVER FOR BRAKE	1
7. DUT-PUT GEAR	1	21. HEX-SOCKET CAP BOLT	5	35. SPRING LOCK WASHER	4	48. BRAKE LINING	1
8. GEAR CASE A	1	22. CONNECT PLATE	1	36. HEX-SOCKET CAP BOLT	4	49. FRICTION DISC	1
9. BALL BEARING 6203ZZ	1	23. SHAFT RETAINING RING	1	37. MOTOR HOUSING	1	50. BRAKE COVER	1
10. BALL BEARING 6209ZZ	1	24. BALL BEARING	1	38. PLASTIC BOLT + NUT	2	51. SPRING LOCK WASHER	4
11. DUT-PUT SHAFT	1	25. BALL BEARING	1	39. DIODE	1	52. HEX-SOCKET CAP BOLT	1
12. KEY	1	26. FLY WHEEL	1	40. HOUSING TOP COVER	1	53. BRAKE SPRING	1
13. 2" GEAR	1	27. BALL BEARING	1	41. COVER BOLT	4	54. TORQUE ADJUSTING NUT	1
14. DUT-PUT SHAFT RING	1	28. 1" PINION	1	42. NAME PLATE	1	55. TORQUE ADJUSTING BOLT	1

# Soft Start Reduce Motor

Professional manufacturer of full range of motors with light weight ,prominent feature, low noise, high performance, reliability and durability.



speed



- Without Brake and Soft Start
- With Brake Without Soft Start
- With Brake and Soft Start

### Characteristics

- The motor's case is made by Aluminum Alloy material with light weight, excellent thermal diffusion and prominent feature.
- Adopting Steel Alloy material to complete the precise Gear that in process of quench treatment and grinding procedure to make the motor move at low noise.
- A Buffer is designed to enhance the motor's life as well as to decrease the impact when the motor is running.
- IP54 motor comes with high starting torque, excellent thermal diffusion, compact, low current, reliability and durability.
- Incorporating a Direct electro-magnetic Brake, the driving force of the motor can be easily adjusted

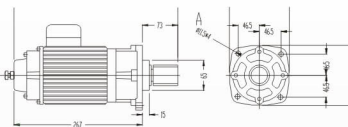
### Definition of the code

► C075 C2 S P4-60-220-M4X10 L

type / C  
horse power (HP) / 075  
various polarities / C2 ; C3  
with buffer / S ; without buffer / N  
number of poles / P4  
frequency / 60  
voltage / 220  
modulus / M4  
number of teeth / 10  
low speed / L ; high speed / H

### TYPE / A

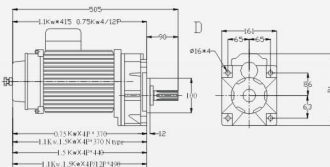
TYPE	KW	P	VOLTAGE	RATIO	50HZ	60HZ	G	WEIGHT
A025P4L A025P4H	0.25	4	220-440	10 7.8	150	180	M3 M3.5	12
A025P6L A025P6H	0.25	6	220-440	10 7.8	100	120	M3 M3.5	13
A037P4L A037P4H	0.375	4	220-440	10 7.8	150	180	M3 M3.5	13
A018P8L A018P8H	0.18	8	220-440	10 7.8	75	90	M3 M3.5	13



### TYPE / D

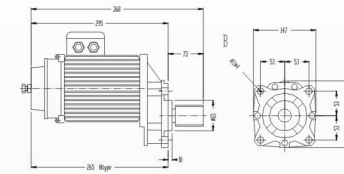
TYPE	KW	P	VOLTAGE	RATIO	50HZ	60HZ	G	WEIGHT
D075P4S D075P4N	0.75	4	220-600	1:3	113	135	M3.5 M4 M5	27 21
D060P6S D060P6N	0.6	6	220-600	1:3	75	90	M3.5 M4 M5	27 21
D110P4S D110P4N	1.1	4	220-600	1:3	113	135	M3.5 M4 M5	36 30
D075P6S D075P6N	0.75	6	220-600	1:3	128	153	M3.5 M4 M5	36 30
D150P4S D150P4N	1.5	4	220-600	1:3	113	135	M3.5 M4 M5	40 34
D110P6S D110P6N	1.1	6	220-600	1:3	128	156.5	M3.5 M4 M5	40 34
D040P8S D040P8N	0.38	8	220-600	1:3	56.5	135/67	M3.5 M4 M5	27 21
D055P8S D055P8N	0.55	8	220-600	1:3	56.5	135/45	M3.5 M4 M5	31 27
D075P8S D075P8N	0.75	8	220-600	1:3	56.5	135/67	M3.5 M4 M5	40 34
D040C2S D040C2N	0.4*0.2	4*8	220-600	1:3	113/56	135/45	M3.5 M4 M5	27 21
D040C3S D040C3N	0.4*0.13	4*12 2*6	220-600	1:3	113/38	135/67	M3.5 M4 M5	27 21
D060C2S D060C2N	0.6*0.3	4*8	220-600	1:3	113/56	135/67	M3.5 M4 M5	29 25
D060C3S D060C3N	0.6*0.2	4*12 2*6	220-600	1:3	113/38	135/45	M3.5 M4 M5	29 25
D075C2S D075C2N	0.75*0.38	4*8	220-600	1:3	113/56	135/67	M3.5 M4 M5	32 26
D075C3S D075C3N	0.75*0.25	4*12 2*6	220-600	1:3	113/38	135/45	M3.5 M4 M5	32 26
D110C2S D110C2N	1.1*0.55	4*8	220-600	1:3	113/56	135/67	M3.5 M4 M5	42 36
D110C3S D110C3N	1.1*0.37	4*12 2*6	220-600	1:3	113/38	135/45	M3.5 M4 M5	42 36
D150C2S D150C2N	1.5/0.75	4*8	220-600	1:3	113/56	135/67	M3.5 M4 M5	46 40
D150C3S D150C3N	1.5/0.5	4*12 2*6	220-600	1:3	113/38	135/45	M3.5 M4 M5	46 40

ALL TAPE 2/6 CAN CHANGE TO 2/8



### TYPE / B

TYPE	KW	P	VOLTAGE	RATIO	50HZ	60HZ	G	WEIGHT
B040P4S B040P4N	0.4	4	220-600	8.5	176	211	M3 M3.5	21.5 17.5
B030P6S B030P6N	0.3	6	220-600	8.5	118	141	M3 M3.5	21.5 17.5
B020P8S B020P8N	0.2	8	220-600	8.5	88	105	M3 M3.5	21.5 17.5
B020C2S B020C2N	0.2/0.1	4*8	220-600	8.5	176/88	211/105	M3 M3.5	21.5 17.5
B020C3S B020C3N	0.2/0.07	4*12	220-600	8.5	176/59	211/70	M3 M3.5	21.5 17.5
B040C2S B040C2N	0.4/0.13	4*12	220-600	8.5	176/59	211/32	M3 M3.5	22.5 18.5
B040C2S B040C2N	0.4/0.13	4*12	220-600	8.5	176/59	211/32	M3 M3.5	22.5 18.5



### TYPE / C

TYPE	KW	P	VOLTAGE	RATIO	50HZ	60HZ	G	WEIGHT
C075P4S C075P4N	0.75	4	220-600	7.7	192	230	M3 M3.5 M4	27 21
C060P6S C060P6N	0.6	6	220-600	7.7	128	153	M3 M3.5 M4	27 21
C110P4S C110P4N	1.1	4	220-600	7.7	192	230	M3 M3.5 M4	31 27
C075P6S C075P6N	0.75	6	220-600	7.7	128	153	M3 M3.5 M4	31 27
C040P8S C040P8N	0.38	8	220-600	7.7	96	115	M3 M3.5 M4	27 21
C055P8S C055P8N	0.55	8	220-600	7.7	96	115	M3 M3.5 M4	31 27
C040C2S C040C2N	0.4*0.2	4*8	220-600	7.7	192/96	230/115	M3 M3.5 M4	27 21
C040C3S C040C3N	0.4*0.13	4*12	220-600	7.7	192/64	230/77	M3 M3.5 M4	27 21
C060C2S C060C2N	0.6*0.3	4*8	220-600	7.7	192/96	230/115	M3 M3.5 M4	31 27
C060C3S C060C3N	0.6*0.2	4*12	220-600	7.7	192/64	230/77	M3 M3.5 M4	31 27
C075C2S C075C2N	0.75*0.38	4*8	220-600	7.7	192/96	230/115	M3 M3.5 M4	35 29
C075C3S C075C3N	0.75*0.25	4*12	220-600	7.7	192/64	230/77	M3 M3.5 M4	35 29
C110C2S C110C2N	1.1/0.55	4*8	220-600	7.7	192/96	230/115	M3 M3.5 M4	38 32
C110C3S C110C3N	1.1/0.37	4*12	220-600	7.7	192/64	230/77	M3 M3.5 M4	38 32

